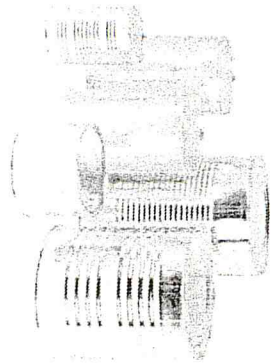
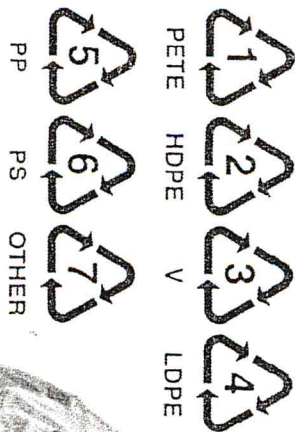
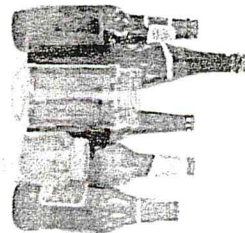
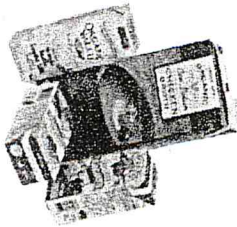


Here's what you CAN recycle:

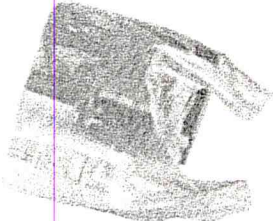
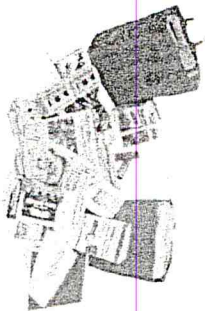


Metal & glass containers

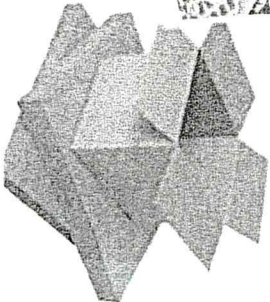
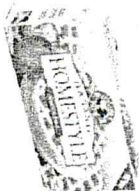
Aseptic Packaging & cartons



ALL types of plastic including plastic bags!



Paper & cardboard including magazines & junk mail



Benzie County 24/7 Recycling Program

Dates to mark on your calendar for 2016

Household Hazardous Waste / Electronics Collections in 2016:

Saturday, June 25, 2016 - 9 am until 1:00 pm 404 Parkview Lane, Frankfort, MI

Saturday, July 23, 2016 - 9 am until 1:00 pm Road Commission, Honor, MI
(Road Commission location not yet confirmed at the time of this printing)

Appointments are required for these collections. There is no charge for residents to dispose of household hazardous waste. Unfortunately, there will be a charge of \$.30 per pound for televisions and monitors due to changes in Michigan's e-waste policy. Call 882-0554 for an appointment at the collection most convenient for you.

Earth Day Clean Out Your Files Event

Confidential paper shredding provided FREE on **Wednesday, April 20, 2016**, 9 am – noon at the Benzie Resource Center on M115. Limit of 3 bags or boxes please.

Earth Day Latex Paint Recycling Event

Latex Paint can be brought to the Habitat for Humanity Restore, Honor, on **Saturday, April 23, 2016**, 9:30 am – 3:30 pm. No appointment necessary. There is a charge of \$1.00 per can to recycle latex paint.

More collections will be planned for 2016. Information is not available at this time.

Benzie County 24 / 7 Residential Recycling Program 2016

Benzie County's 24/7 residential recycling program offers Single Stream Recycling to help households save money by throwing away less and recycling more!

Here's a list of the simple rules we all must follow in the recycling program:

- All recyclables must be clean and empty (no food or liquids)
- All cardboard boxes must be flattened
- All plastic must have a recycling logo with a # inside it (All numbers of plastic may be recycled from #1 - #7). This includes plastic bags – look for the number
- Recyclable plastics and tin & aluminum containers may be placed together in one bin with paper & flat cardboard
- Juice boxes, milk cartons, etc. may go in the bin with tin, plastic & paper. This is called Asptic packaging and is now acceptable in the program.
- Polystyrene packaging with a #6 on it may go in the bin with tin, plastic & paper (clean, take-out packaging, produce trays, cups, etc.)
- Shredded paper and mixed paper can be placed in the bin inside a paper bag.
- Other than shredded paper, all other recyclables must be loose
- Plastic bags must be emptied of its contents and placed loosely in the bin. Tear open your bag and let items drop into the window of the bin.
- Glass is not acceptable in the single stream bin. Glass is processed at a different location than other recyclables. Plus, it is a safety hazard to workers sorting at the processing facility. Don't put glass in with tin, plastic & paper.
- Glass bottles and jars must be placed in the GLASS ONLY dumpster. No window glass or ceramics allowed; only bottles and jars are accepted.
- Always fill one bin up first before opening another bin. This helps the program run efficiently. We must have a full bin when we transport it to the processing facility. Do not open an empty bin until the other one is full.
- Never leave anything on the ground at a recycling site. That is illegal dumping. Violators will be prosecuted.
- Never put trash or construction material in a recycling bin. That is also illegal dumping. Violators will be prosecuted.
- 24/7 Recycling sites are for Benzie County residential use only. Businesses and events must obtain a permit before using a residential recycling site.
- Use a school cardboard recycling trailer whenever you have a quantity of cardboard to deliver. Schools benefit from all cardboard recycled at these trailers.

If we follow the simple rules listed above we will continue to have an efficient and cost effective program.

Household Hazardous Waste Collections are planned for June 25 and July 23, 2016. Appointments are required. No charge to residents for HHW. Electronics will be collected at these events, but there is a charge of \$.30 per pound for televisions and monitors. More information listing event locations and times will be available soon on the website. Call the Recycling Coordinator with any questions at 882-0554 or visit the website at www.benzieco.net click on departments, then on Solid Waste/Recycling.